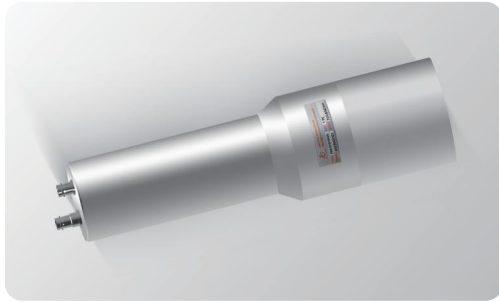


## 1. Overview



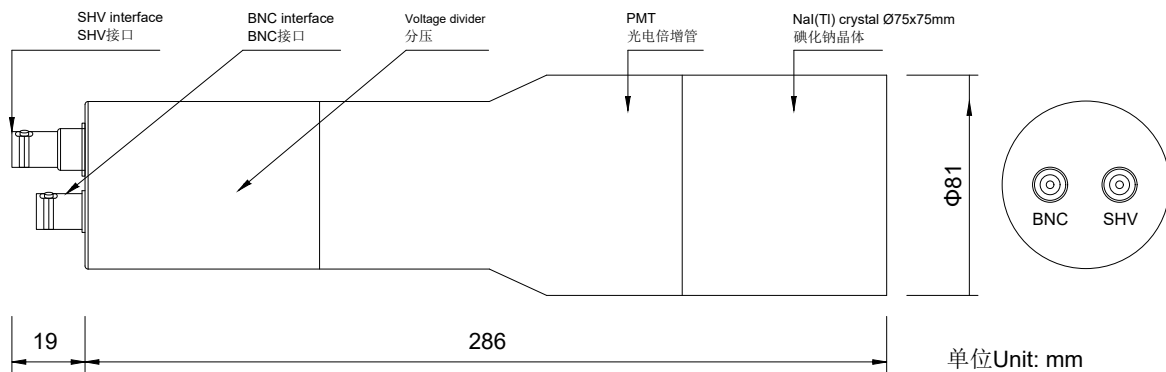
ENAI-D76H76VD01 scintillator detector is composed of a 3-inch NaI scintillator crystal, photomultiplier tube and voltage divider. Due to its high detection efficiency, good energy resolution, flexible matching, stable performance and easy to use, it is widely used in the fields of energy spectrum measurement analysis, building materials, food and other radioactive level analysis.

## 2. Main technical parameters

- ▶ Application voltage ..... 0~+1250V
- ▶ Effective size of scintillator .....  $\Phi 75 \times 75 \text{mm}$
- ▶ Interface type ..... BNC、SHV
- ▶ Energy resolution .....  $\leq 7.5\%$
- ▶ Work environment Temperature ..... 0~+40℃
- ▶ Storage environment Temperature ..... -20~+60℃
- ▶ Storage environment Humidity ..... <90%RH

Note: 1) The output state of the detector is adjusted by using  $^{137}\text{Cs}$  radioactive source test.

## 3. Outline Dimensional Drawing



### Wiring Instructions

Interface type	SHV interface	BNC interface
Port definition	0~+1250V power supply	Signal interface