

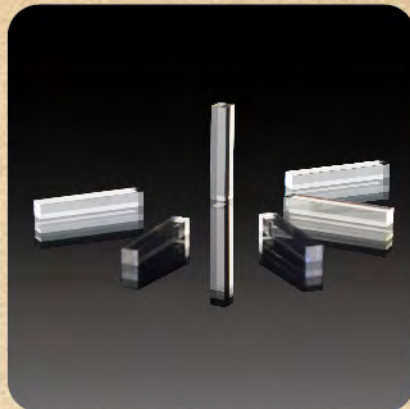
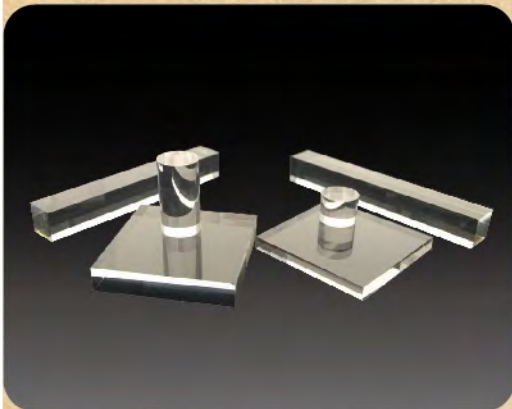


Epic-Crystal

**Efficient, Professional,
Intelligent, Customer-Oriented**

上海烁杰晶体材料有限公司

YSO(CE) SCINTILLATOR



YSO(Ce) Scintillator

Cerium doped Silicate Yttrium, YSO(ce) scintillator belongs to mono-clinic rare earth ortho-silicate crystal, it is similar with the LYSO(ce) crystal, while generally was used as a semi-conductor and in photo optic applications.

BASIC INFORMATION

Growth method: Czochralski
Dimensions(maximum): \varnothing 80 mm x 200 mm length
Available items: Single crystal

GENERAL PROPERTIES

Density(g.cm ⁻³).....	4.50
Decay time(ns).....	50-70
Light output(Photons/Mev).....	12,000
Melting point(K).....	2273
Wavelength of emission peak(nm).....	420
Refractive index.....	1.80
Hygroscopic.....	no
Cleavage.....	no

FEATURES

Relatively fast decay time、 Strong anti-radiation damage

APPLICATIONS

Nuclear medicine、 Photo optic application

上海烁杰晶体材料有限公司

EPIC CRYSTAL COMPANY LIMITED

Tel/Fax: +86-21-39215234; +86-21-50135884

Email: sales@epic-crystal.com

Factory: No 59, Lane 300, Shunda Rd, Nanxiang Town, Jiading District, Shanghai 201802, China

Sales: Rm 972, Block D, Zhongyin International, Huaqiao Town, Kunshan City, Jiangsu Province 215332, China