



Nal(Tl)

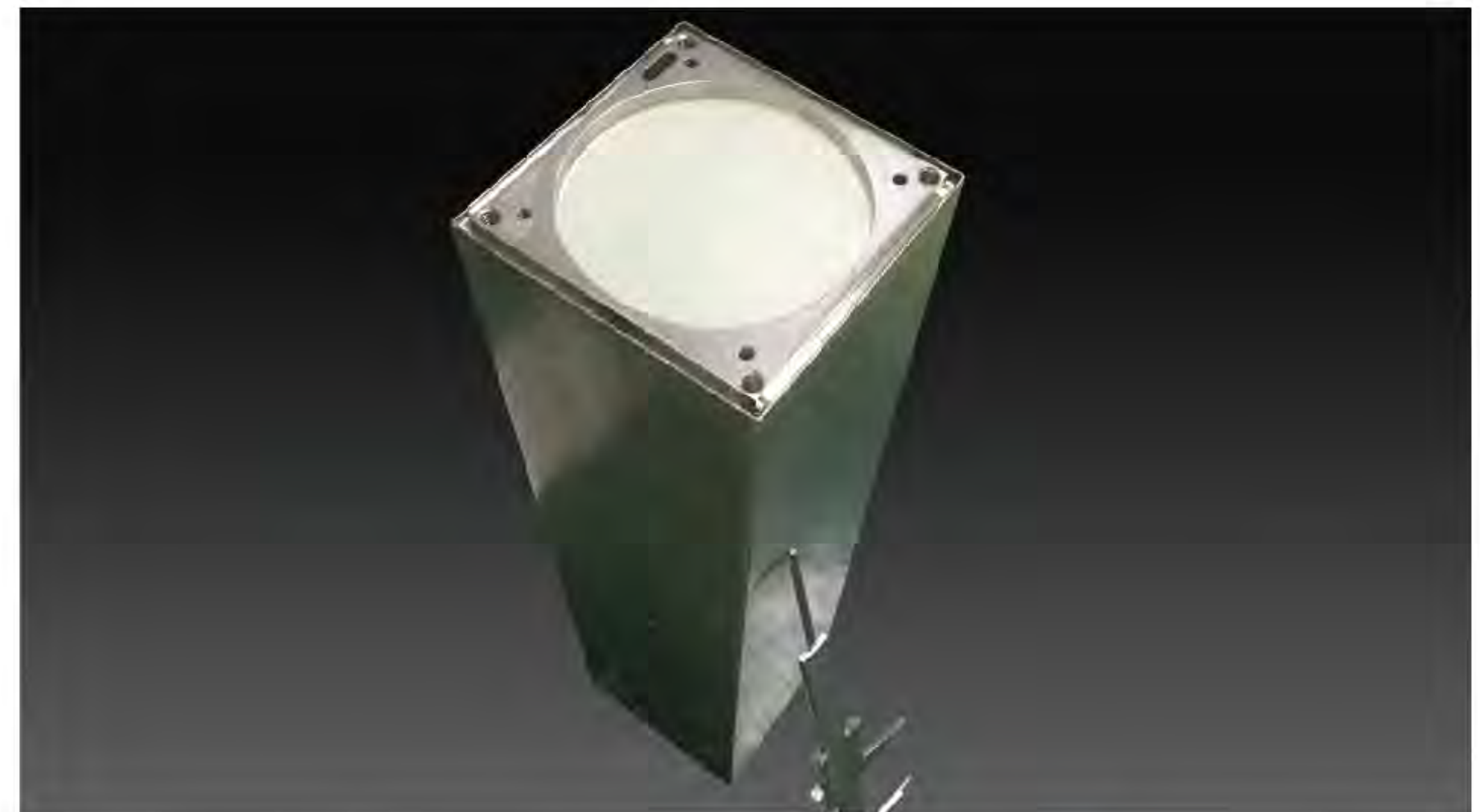
Thallium doped sodium iodide, NaI(Tl), is the most widely used scintillation material, it has the greatest light output and convenient emission range coincident with maximum efficiency region of photo multiplier tube(PMT).

Scintillation properties

Emission wavelength [nm]	415
Decay time [ns]	264
Light output [Photons/Mev]	45,000
Energy resolution [662 KeV]	7.2%

Maximum dimension

Diameter [mm]	150
Length [mm]	400



Characterization

Dimension:diameter 40×40mm length

PMT: R1306, Reflector: Teflon(0.80 mm), Source: Cesium 137, HV: 650V

Light output 45,000 photons/Mev, Energy resolution 7.2%, Decay time: 264 ns

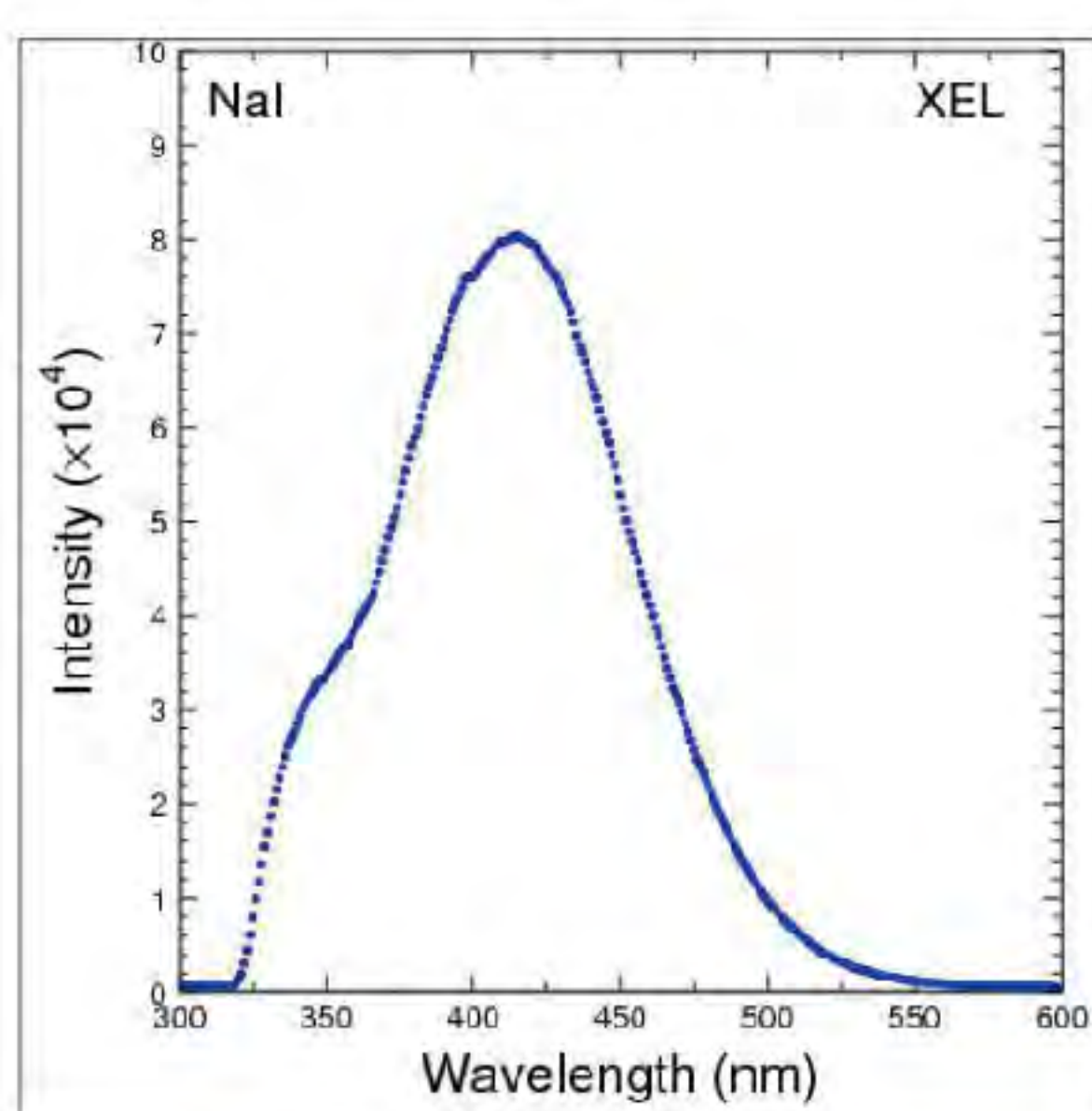


Figure 1 X-Ray excited Luminescence curve

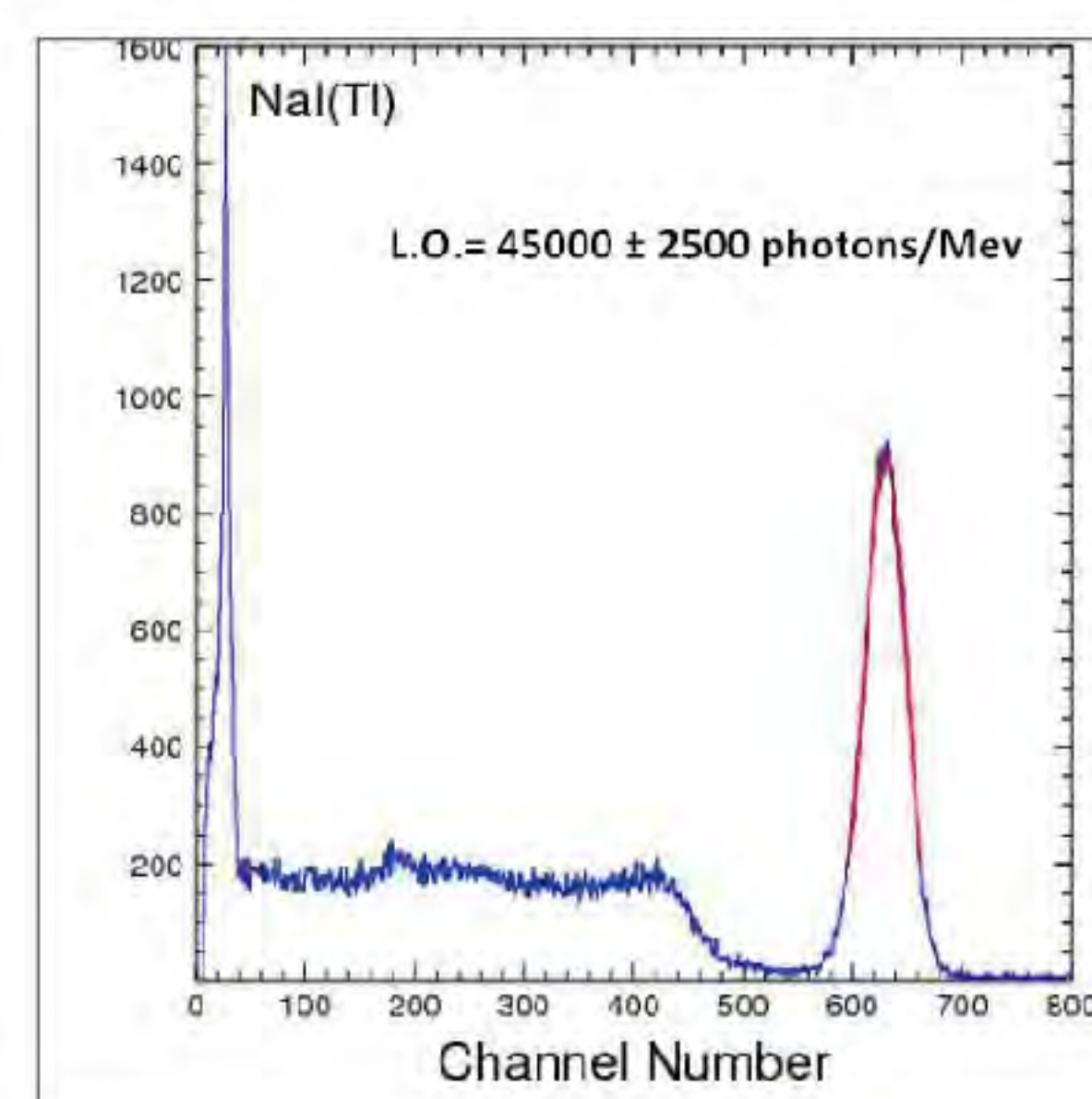


Figure 2 Light output curve

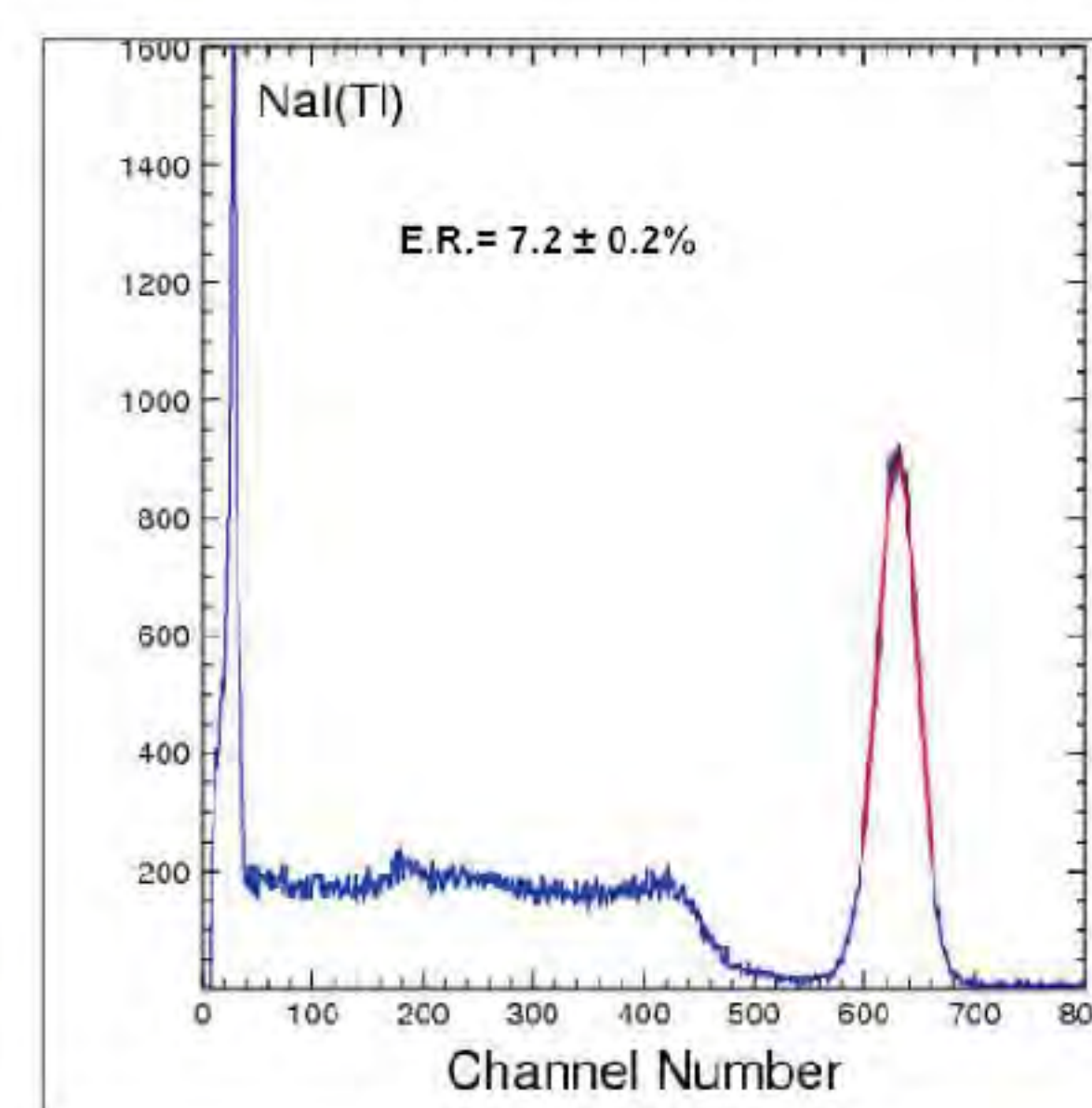


Figure 3 Energy resolution curve

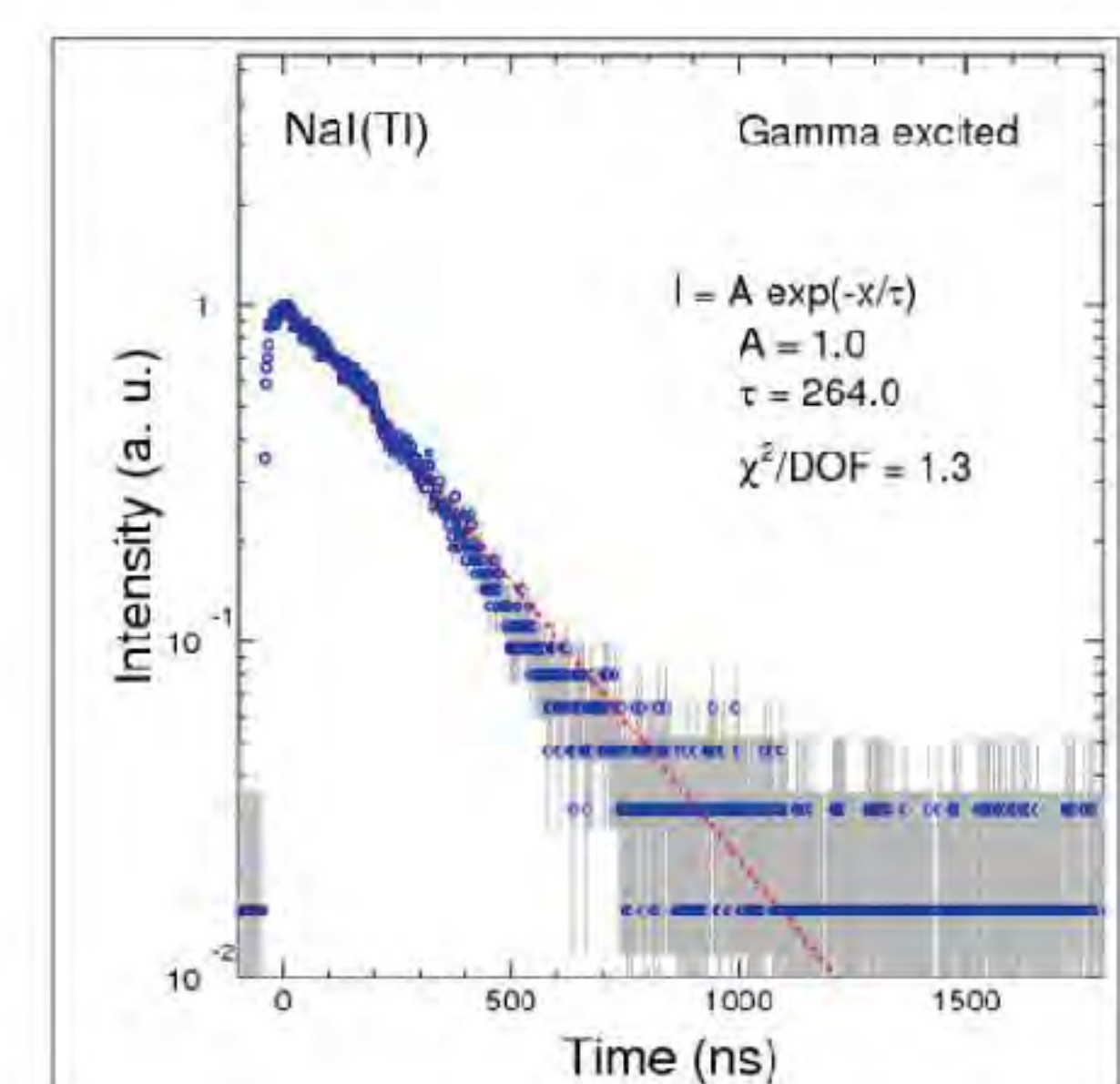


Figure 4 Scintillation decay curve by gamma ray excited

Contact us

Add: Rm 972, Block D, ZhongYin International Cooperation Garden, Huaqiao Town, Kunshan City, Jiangsu Province 215332, China

Tel/Fax: +86 512-5013-5884 / +86 21 3921 5234

Email: sales@epic-crystal.com / info@epic-scintillator.com

Website: www.epic-crystal.com